



SMC-SMH PRE-FABRICATED BATHROOM UNITS

We manufacture and supply composite Steel Framing Mag-Fiber bathroom pods (no tiling required) and complete modular bathrooms (shower WC and wash basin included). We have five different models of complete en-suite modules which provide three functions of shower, lavatory & wash basin. They're easy to install and completely waterproof. Contact us today to find out more.



www.somundyportugal.com
www.smc-smh.com

SMC - SMH
Construções
Modulares

Easy to install!
Water resistant!
Strong & durable!
Space efficient!
Quality products...guaranteed!

250,000²ft production plant

35yrs experience

highly skilled craftsmen

blue chip clients



www.somundyportugal.com
www.smc-smh.com



Modular en-suite
toilet shower rooms



Shower only
cubicles

Mini Shower Room Pod

Factory Build Bathrooms

Price: €2,455.00

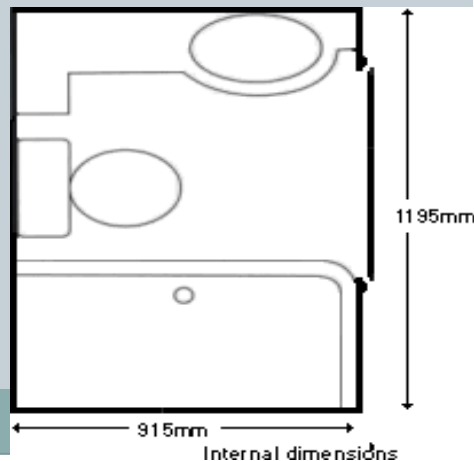
www.somundyportugal.com
www.smc-smh.com

Designed for the smallest space, this amazing unit gives a full three function en-suite for that small room where you really need bathroom facilities. The unit has the benefit of low voltage lighting, standard size WC and a basin with a shower measuring an amazing 36"x20".

The Steel Frame pre-fabricated unit is cover with fire-retardant MAG-FIBER and comes completely finished and ready to install.

Being the baby of our family, this unit has the least number of panels which means assembly and installation are even quicker.

- Modular
- Strong
- Easy installation
- Space efficient
- Total water resistant
- Easy to clean
- Choice of colours
- Long lasting
- Affordable



Petite Bathroom Pod

Factory Build Bathrooms

Price: €2,603.00

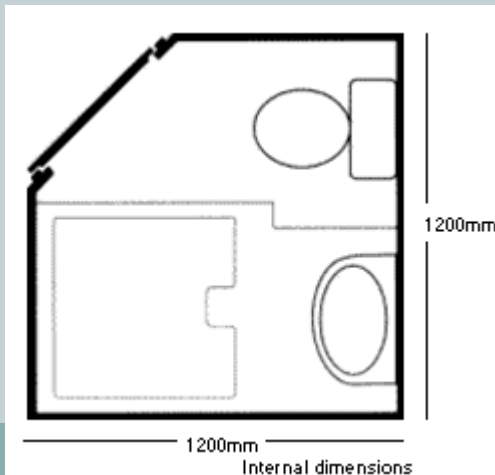
www.somundyportugal.com
www.smc-smh.com

This small unit has "Tardis-like" qualities! Only 1.2m but with a full size shower cubicle and large hand basin its design is highly ingenious. By combining some of the functional space, with no sacrifice of usability, it packs a lot into a little.

The Steel Frame pre-fabricated unit is cover with fire-retardant MAG-FIBER and comes completely finished and ready to install.

Designed primarily for corner installations it can also be used free standing.

- Modular
- Strong
- Easy installation
- Space efficient
- Total water resistant
- Easy to clean
- Choice of colours
- Long lasting
- Affordable



Midi Bathroom Pod

Factory Build Bathrooms

Price: €2,680.00

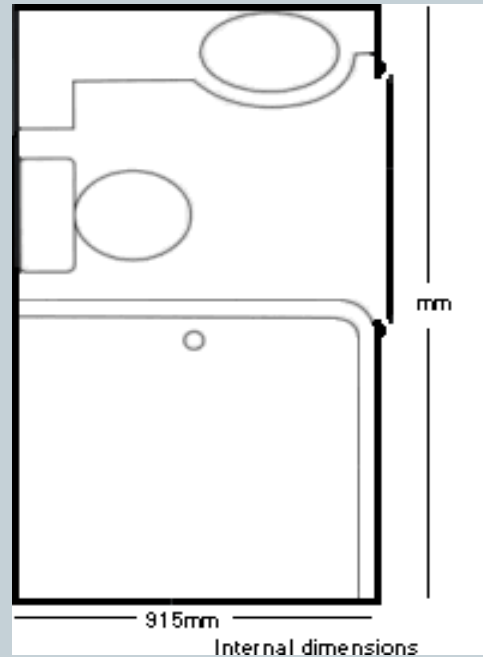
www.somundyportugal.com
www.smc-smh.com

This amazing unit gives a full three function en-suite for that room where you really need bathroom facilities.

The Steel Frame pre-fabricated unit is cover with fire-retardant MAG-FIBER and comes completely finished and ready to install.

The unit has the benefit of low voltage lighting, standard size WC and a wash basin with a shower measuring an amazing 1.00m x 1.00m.

- Modular
- Strong
- Easy installation
- Space efficient
- Total water resistant
- Easy to clean
- Choice of colours
- Long lasting
- Affordable



Derby Bathroom Pod

Factory Build Bathrooms

Price: €2,755.00

www.somundyportugal.com

www.smc-smh.com

The Derby en-suite has been designed to enhance the smallest space, this amazing unit gives a full three function en-suite for the smallest room. This unit has the benefit of low voltage lighting, standard size wc and basin and a large shower area.

The well lit unit using low voltage lighting, standard size wc and hand basin with a generous shower area gives an exceptional feeling of space and luxury.

The Steel Frame pre-fabricated unit is cover with fire-retardant MAG-FIBER and comes completely finished and ready to install.

With a range of shower types available these cubicles can be installed with a minimum of fuss. The basic units require cladding or can be built into alcove situations.

- Total water resistant
- Easy to clean
- Economical and luxurious answer to en-suite installation
- A pre wired electrical system including light, extractor fan and switch
- Units available in left or right hand layout
- Choice of various door styles with right or left hand hanging
- The unit can be supplied assembled or as a 'flat pack' for self assembly if the access to its final location is limited
- A top access waste trap is fitted for ease of cleaning
- The unit is fitted with four adjustable feet to enable accurate levelling when fitting in final location
- Various types of shower are available for installing into the unit



Lightning Bathroom Pod

Factory Build Bathrooms

Price: €2,755.00

www.somundyportugal.com
www.smc-smh.com

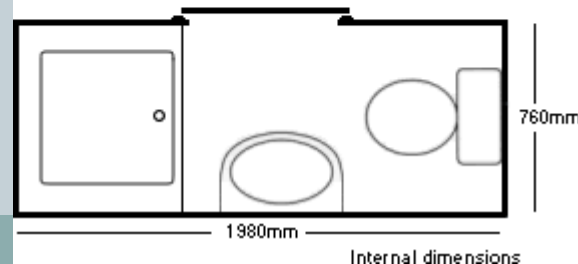
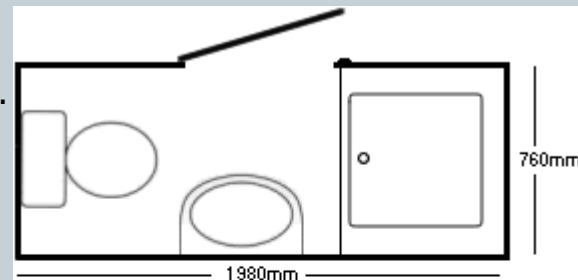
This rectangular unit offers a generous shower, wc and hand basin en-suite in a convenient 1980mm x 760mm internal layout.

The unit is available in left or right hand configurations.

The well lit unit using low voltage lighting, standard size wc and hand basin with a shower area measuring 760 x 680mm gives an exceptional feeling of space and luxury. The Steel Frame pre-fabricated unit is cover with fire-retardant MAG-FIBER and comes completely finished and ready to install.

With a range of shower types available these cubicles can be installed with the minimum of fuss. The basic units require cladding or can be built into alcove situations.

- Total water resistant
- Easy to clean
- Economical and luxurious answer to en-suite installation
- A pre wired electrical system including light, extractor fan and switch
- Units available in left or right hand layout
- Choice of various door styles with right or left hand hanging
- The unit can be supplied assembled or as a 'flat pack' for self assembly if the access to its final location is limited
- A top access waste trap is fitted for ease of cleaning
- The unit is fitted with four adjustable feet to enable accurate levelling when fitting in final location
- Various types of shower are available for installing into the unit



Internal dimensions

Wellington Bathroom Pod

Factory Build Bathrooms

Price: €3,031.00

www.somundyportugal.com

www.smc-smh.com

This rectangular unit offers a generous shower, wc and hand basin en-suite in a convenient 1845mm x 960mm internal layout.

The unit is available in left or right hand configurations.

The well lit unit using low voltage lighting, standard size wc and hand basin with a shower area measuring 960 x 615mm gives an exceptional feeling of space and luxury.

The Steel Frame pre-fabricated unit is cover with fire-retardant MAG-FIBER and comes completely finished and ready to install.

With a range of shower types available these cubicles can be installed with the minimum of fuss. The basic units require cladding or can be built into alcove situations.

- Totally waterproof
- Easy to clean
- Economical and luxurious answer to en-suite installation
- A pre wired electrical system including light, extractor fan and switch
- Units available in left or right hand layout
- Choice of various door styles with right or left hand hanging
- The unit can be supplied assembled or as a 'flat pack' for self assembly if the access to its final location is limited
- A top access waste trap is fitted for ease of cleaning
- The unit is fitted with four adjustable feet to enable accurate levelling when fitting in final location
- Various types of shower are available for installing into the unit



Continental Bathroom Pod

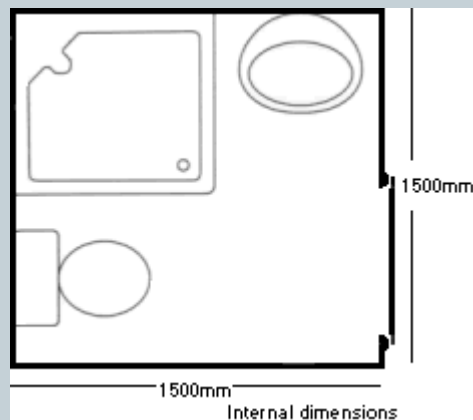
www.somundyportugal.com
www.smc-smh.com

Factory Build Bathrooms

Originally designed for the export market, this larger unit has proved very popular here in Europe. It is available with a corner entry glass/aluminium shower enclosure or a rail and curtain. Three low voltage downlighters are standard which provide a really bright cheerful atmosphere inside. The Steel Frame pre-fabricated unit is cover with fire-retardant MAG-FIBER and comes completely finished and ready to install.

With a range of shower types available these cubicles can be installed with a minimum of fuss. The basic units require cladding or can be built into alcove situations.

- Modular
- Strong
- Easy installation
- Space efficient
- Total water resistant
- Easy to clean
- Choice of colours
- Long lasting
- Affordable



Price: €3,324.00

FREQUENTLY ASKED QUESTIONS

www.somundyportugal.com
www.smc-smh.com

Factory Build Bathrooms



What are the units made of?

Steel Framing Structure and Mag-Fiber wall cover.

How do I know if the unit will fit?

Phone for advice or request a free no obligation survey

How will the units fit through doorways and upstairs?

Units can be supplied in modules or in panel form and are bolted together on site

Will it look like a steel box?

No - the units can easily be clad and decorated to match the decor of the room

Will I need builders to install the units or can I do it myself?

Your choice. Many competent DIYers do install these units. You'll need moderate skills in plumbing and general building. Contact us for detailed advice

What are these units most suitable for?

Communal premises - flats, bedsits, hotels and guesthouses or additional guest bedrooms that require an en-suite bathroom

“ LSF ” LIGHT STEEL FRAMING

Factory Build Bathrooms

